



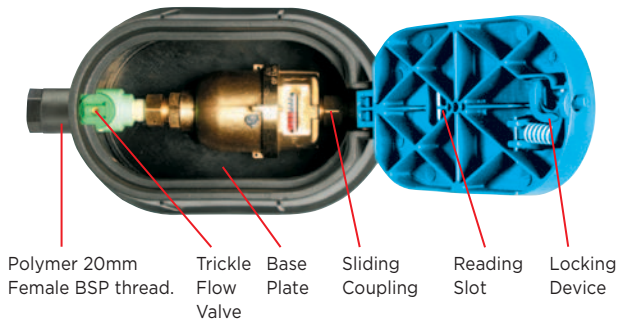
**THE POLYMER SURFACE
METERBOX RANGE**

**TOUGH, TOP QUALITY,
UV RESISTANT
POLYMERS ENSURE THAT
HONEYWELL METERBOXES
MATCH UP TO AFRICA'S
HARSHEST CONDITIONS.**

There is a range of polymer meterboxes to house 15, 20 and 25 mm water meters. For 15 mm domestic installations, there is the contractors meterbox for 114 mm long polymer meters. For polymer or brass meters 165 mm long, there is the standard meterbox. An additional standard polymer meterbox houses a plastic y strainer.

Features:

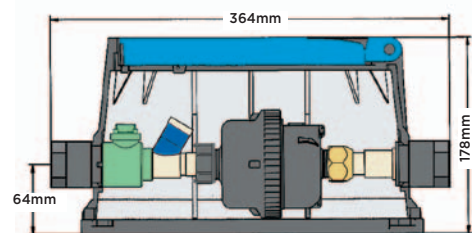
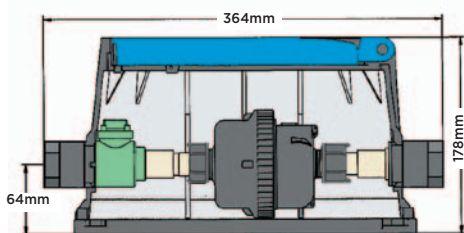
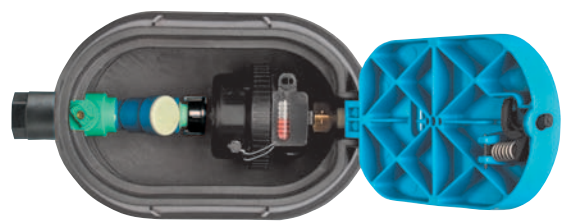
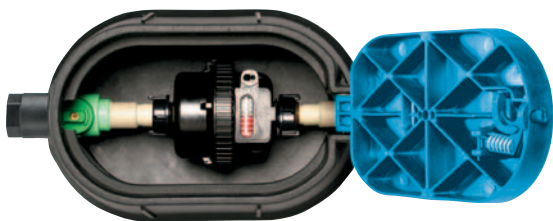
1. Class C meters are fitted in all sizes of meterboxes, and there is an approved pulse output and non return valve on all V100 PSM and V110 KSM meters, which are upgradable to AMI (Automatic Meter Reading)
2. Patented locking mechanism, requiring a special key to open the lid.
3. Unique couplings, designed to slide back facilitating meter replacement.
4. The meter/ballcock assembly is keyed where it passes through the meterbox to prevent it from rotating during installation.
5. High quality ballcock shut off valves without rising headparts which can cause leaks.



Polymer 20mm
Female BSP Thread

**The STANDARD POLYMER
CONTRACTORS METERBOX
with a 114mm V110 KSM METER**

**The STANDARD POLYMER METERBOX
with a 114mm POLYMER V110 KSM
METER with a PLASTIC Y STRAINER**



Meterbox Features:

- Base Plate.
- 13mm 3 way polymer trickle-flow ballcock.
- Unique couplings, designed to slide back facilitating meter replacement.
- The meter/ballcock assembly is keyed where it passes through the meterbox to prevent it from rotating during installation.

Meterbox Features:

- Base Plate.
- 13mm 3 way polymer trickle-flow ballcock.
- Unique couplings, designed to slide back facilitating meter replacement.
- The meter/ballcock assembly is keyed where it passes through the meterbox to prevent it from rotating during installation.

Meterbox Option: Lockshield for 3 way ballcock.

Meterbox Option: Lockshield for 3 way ballcock.

Specifications:

External connections: 20mm female BSP thread.

Mass with Meter: 2,2kg

Meter Type: 114mm long 15mm Class C volumetric polymer wet dial V110 KSM meter with pulse output and non-return valve.

Stop Valve: 13mm 3 way polymer trickle-flow ballcock.

Specifications:

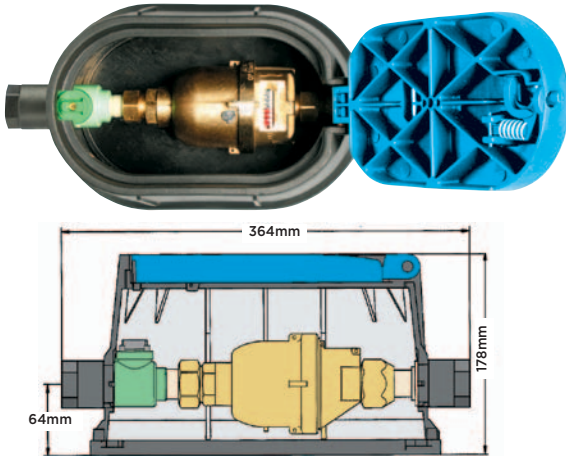
External connections: 20mm female BSP thread.

Mass with Meter: 2,2kg

Meter Type: 114mm long Ø 15mm Class C volumetric polymer wet dial V110 KSM meter with pulse output and non-return valve.

Stop Valve: 13mm 3 way polymer trickle-flow ballcock and plastic **strainer**.

The STANDARD POLYMER METERBOX with a 165mm BRASS V100 PSM METER



Meterbox Features:

- Base Plate.
- 13mm 3 way polymer trickle-flow ballcock
- Unique couplings, designed to slide back facilitating meter replacement.
- The meter/ballcock assembly is keyed where it passes through the meterbox to prevent it from rotating during installation.

Meterbox Option: Lockshield for 3 way ballcock.

Specifications:

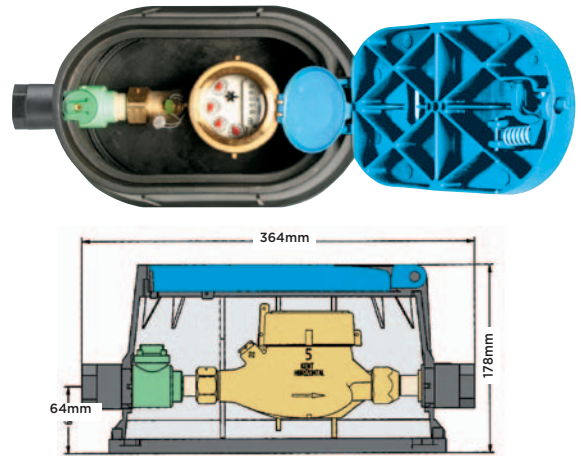
External connections: 20mm female BSP thread.

Mass with Meter: 3kg

Meter Type: 165mm long Ø 15mm or Ø 20mm Class C, brass volumetric, wet dial V100 PSM meter with pulse output and non-return valve.

Stop Valve: 13mm 3 way polymer trickle-flow ballcock.

The STANDARD POLYMER METERBOX with a 165mm BRASS M100 OPTIMA METER



Meterbox Features:

- Base Plate.
- 13mm 3 way polymer trickle-flow ballcock
- Unique couplings, designed to slide back facilitating meter replacement.
- The meter/ballcock assembly is keyed where it passes through the meterbox to prevent it from rotating during installation.

Meterbox Option: Lockshield for 3 way ballcock.

Specifications:

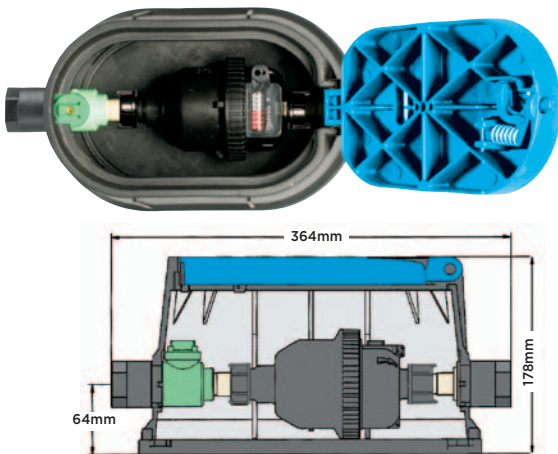
External connections: 20mm female BSP thread.

Mass with Meter: 3,4kg

Meter Type: 165mm long Ø 15mm or Ø 20mm Class C, brass multijet wet dial M100 Optima meter.

Stop Valve: 13mm 3 way polymer trickle-flow ballcock.

The STANDARD POLYMER METERBOX with a 165mm POLYMER V110 KSM METER



Meterbox Features:

- Base Plate.
- 13mm 3 way polymer trickle-flow ball valve
- Unique couplings, designed to slide back facilitating meter replacement.
- The meter/ballcock assembly is keyed where it passes through the meterbox to prevent it from rotating during installation.

Meterbox Option: Lockshield for 3 way ball valve (plastic).

Specifications:

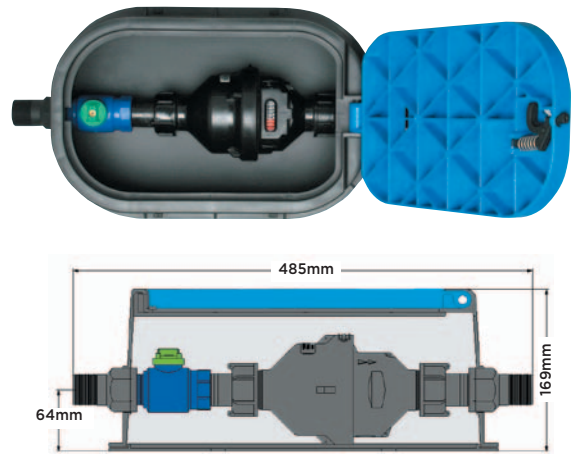
External connections: 20mm female BSP thread.

Mass with Meter: 2,2kg

Meter Type: 165mm long Ø 15mm or Ø 20mm Class C wet dial volumetric V110 KSM meter with pulse output and non-return valve.

Stop Valve: 13mm 3 way polymer trickle-flow ball valve.

The LARGE POLYMER METERBOX for 25mm POLYMER V110 KSM or BRASS V100 PSM METER



Meterbox Features:

- Base Plate.
- 13mm 3 way polymer trickle-flow ballcock
- Unique couplings, designed to slide back facilitating meter replacement.
- The meter/ballcock assembly is keyed where it passes through the meterbox to prevent it from rotating during installation.

Meterbox Option: Lockshield for 3 way ballcock.

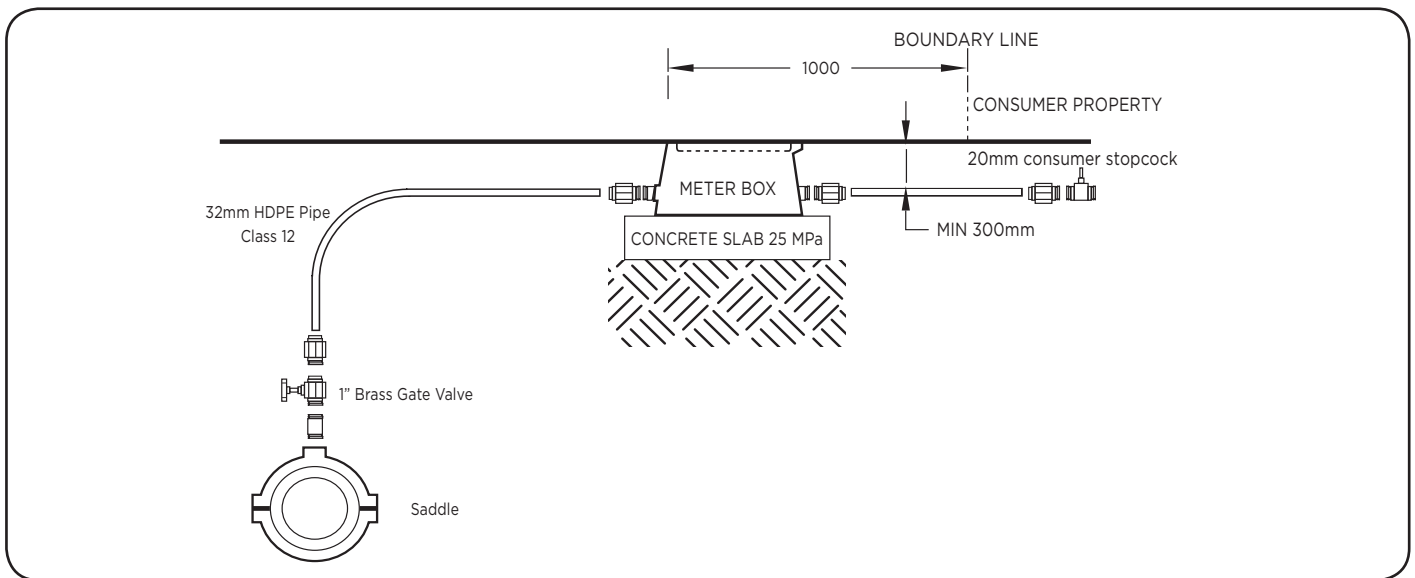
Specifications:

External connections: 20mm female BSP thread.Reinforced insert.

Mass with Meter: 2,2kg

Meter Type: 165mm long Ø 15mm Class C polymer multijet wet dial M100P Optima meter.

Stop Valve: 13mm 3 way polymer trickle-flow ballcock.



Specifications:

Contractors Polymer Meterbox - Meterbox and base plate to be made from a polypropylene compound with hinged lid containing tamperproof locking mechanism and reading slot.. Meterbox to contain 114mm long Ø 15mm Class C semi-positive displacement wet dial meter with polymer body, internal non-return valve and pulse output, sliding coupling and 3 way trickle-flow ballcock that accepts lockshield facility. Connections to be 20mm polymer female threads. The water meter to be approved by the Department of Trade Metrology to SANS 1529-1, 2006, Class C specifications.

Standard Polymer Meterbox (Volumetric) - Meterbox and base plate to be made from a polypropylene compound with hinged lid containing a tamperproof locking mechanism and reading slot. Meterbox to house 3 way trickle flow ballcock and sliding coupling. Inlet and outlet threads to be 20mm reinforced BSP female. All internal joints to be fusion welded. Water meter to be volumetric semi-positive displacement type 165mm long, Ø 15mm or Ø 20mm, either polymer or DRZ brass bodied. The water meters with non-return valve and pulse output to be approved by the Department of Trade Metrology to SANS 1529-1: 2006 to Class C specifications.

Standard Polymer Meterbox (Multijet) - Meterbox and base plate to be made from a polypropylene compound with hinged lid containing a tamperproof locking mechanism and reading slot. Meterbox to house 3 way trickle flow ballcock and sliding coupling. Inlet and outlet threads to be 20mm reinforced BSP female. All internal joints to be fusion welded. Water meter to be multijet fanwheel type, 165mm long with Ø 15mm polymer body, alternatively Ø 15mm or Ø 20mm brass bodied water meters. The water meters with mineral glass lenses to be approved by the Department of Trade Metrology to SANS 1529-1: 2006 to Class C specifications.

Standard Polymer Meterbox (with Strainer) - Meterbox and base plate to be made from a polypropylene compound with a hinged lid containing a tamperproof locking mechanism and reading slot. Meterbox to house a 3 way trickle flow ballcock, y-strainer with large area stainless steel mesh and sliding coupling. Inlet and outlet threads to be 20mm reinforced BSP female. All internal joints to be fusion welded. Water meter to be volumetric semi-positive displacement type 114mm long Ø 15mm polymer body. The water meters with non-return valve and pulse output to be approved by the Department of Trade Metrology to SANS 1529-1: 2006 to Class C specifications.

Large Polymer Meterbox - Meterbox and base plate to be made from a polypropylene compound with a hinged lid containing a tamperproof locking mechanism. Meterbox to contain 198 mm long Ø 25mm Class C semi-positive displacement wet dial water polymer bodied meter with an Ø 19mm 2-way municipal ballcock. Inlet and outlet threads to be Ø 25mm polymer male threads. The water meter to be approved by the Department of Trade Metrology to SANS 1529-1: 2006 to Class C specifications.

Training

Intensive on-site training inclusive of installation, commissioning, operation and maintenance, both hardware and software is conducted. Remote desktop software support forms an integral part of the training, thus ensuring smooth operation of the system as a whole.

Warranty

All goods are tested and inspected prior to despatch. In the event of defects resulting from faulty workmanship or materials, such goods will be replaced/repared at our discretion, free of charge at the factory, but no responsibility will be accepted for any direct or consequential damage. This warranty covers the malfunction of a correctly installed item due to a manufacturing fault, but does not cover wear and tear considered normal at the locality of installation. Product warranty 12 months from date of delivery, which shall be the date on the invoice.

Approvals

Department of Trade Metrology SANS 1529-1:2006, SANS 1529-9:2008

Elster Kent Metering (Pty) Ltd

PO Box 201, Auckland Park 2006

JOHANNESBURG	Tel: (011) 470-4900	Fax: (011) 474-0175
DURBAN	Tel: 082 455 3553	
CAPE TOWN	Tel: (021) 511-8465/6	Fax: (021) 511-8446
BLOEMFONTEIN	Tel: (051) 430-2603	Fax: (051) 430-6165
PORT ELIZABETH	Cell: 082 458-3439	

© 2015 Honeywell International Inc.
All Rights Reserved. The company's policy is one of continuous improvement and the right is reserved to modify the specifications without notice.

www.elstermetering.co.za
www.honeywell.com

86/6/2017

Honeywell